

**(Mouse) Cldn6 Antibody (C-term)**  
**Purified Rabbit Polyclonal Antibody (Pab)**  
**Catalog # AP21069a**

**Specification**

---

**(Mouse) Cldn6 Antibody (C-term) - Product Information**

Application	WB,E
Primary Accession	<a href="#">O9Z262</a>
Reactivity	Mouse
Host	Rabbit
Clonality	Polyclonal
Isotype	Rabbit IgG
Calculated MW	23388

**(Mouse) Cldn6 Antibody (C-term) - Additional Information**

**Gene ID** 54419

**Other Names**

Claudin-6, Skullin, Cldn6

**Target/Specificity**

This mouse Cldn6 antibody is generated from a rabbit immunized with a KLH conjugated synthetic peptide between 146-180 amino acids from the C-terminal region of mouse Cldn6.

**Dilution**

WB~~1:1000

E~~Use at an assay dependent concentration.

**Format**

Purified polyclonal antibody supplied in PBS with 0.09% (W/V) sodium azide. This antibody is purified through a protein A column, followed by peptide affinity purification.

**Storage**

Maintain refrigerated at 2-8°C for up to 2 weeks. For long term storage store at -20°C in small aliquots to prevent freeze-thaw cycles.

**Precautions**

(Mouse) Cldn6 Antibody (C-term) is for research use only and not for use in diagnostic or therapeutic procedures.

**(Mouse) Cldn6 Antibody (C-term) - Protein Information**

**Name** Cldn6

**Function** Plays a major role in tight junction-specific obliteration of the intercellular space, through calcium-independent cell-adhesion activity.

**Cellular Location**

Cell junction, tight junction. Cell membrane; Multi-pass membrane protein

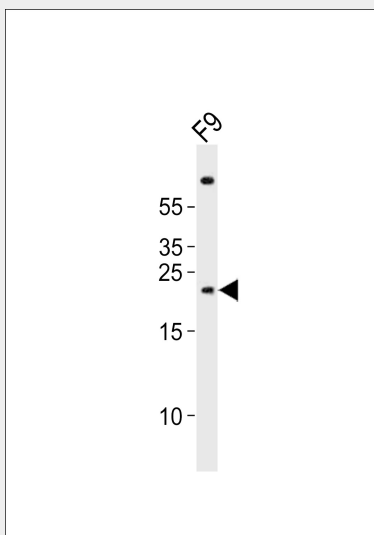
**Tissue Location**

Expressed mostly in embryonic tissues.

**(Mouse) Cldn6 Antibody (C-term) - Protocols**

Provided below are standard protocols that you may find useful for product applications.

- [Western Blot](#)
- [Blocking Peptides](#)
- [Dot Blot](#)
- [Immunohistochemistry](#)
- [Immunofluorescence](#)
- [Immunoprecipitation](#)
- [Flow Cytometry](#)
- [Cell Culture](#)

**(Mouse) Cldn6 Antibody (C-term) - Images**

Western blot analysis of lysate from mouse F9 cell line, using (Mouse) Cldn6 Antibody (C-term)(Cat. #AP21069a). AP21069a was diluted at 1:1000. A goat anti-rabbit IgG H&L(HRP) at 1:10000 dilution was used as the secondary antibody. Lysate at 20ug.

**(Mouse) Cldn6 Antibody (C-term) - Background**

Plays a major role in tight junction-specific obliteration of the intercellular space, through calcium-independent cell-adhesion activity (By similarity).

**(Mouse) Cldn6 Antibody (C-term) - References**

Morita K.,et al.Proc. Natl. Acad. Sci. U.S.A. 96:511-516(1999).  
Troy T.,et al.Submitted (FEB-1999) to the EMBL/GenBank/DDBJ databases.  
Carninci P.,et al.Science 309:1559-1563(2005).  
Itoh M.,et al.J. Cell Biol. 147:1351-1363(1999).